

Introduction

Thank you for ordering the USB-RS232 Converter. The USB-RS232 Converter is an intelligent, stackable expansion module that connects to a PC or server via the Universal Serial Bus (USB) port, providing one high-speed RS-232 serial port. The USB-RS232 features easy connectivity for traditional serial, and others USB devices.

System Requirements

- ★ Pentium-class CPU with USB port PC.
- ★ 1 available USB type A (downstream) port.
- ★ Windows 98, Windows ME, Windows 2000, Windows XP,
MAC 8.6 and later

RS232 (Serial) Port Devices Setting Note:

- ★ Connecting the standard devices after installation completed, then re-plugging the upstream port (USB Type A) of USB-RS232 Converter.
- ★ You have to re-plugging the upstream port (USB Type A) of USB-RS232 Converter when you re-plug or change the serial devices.

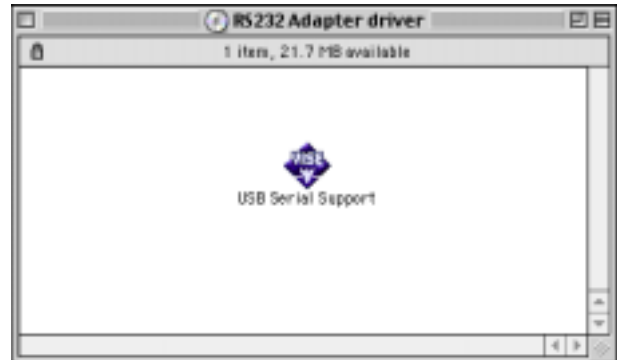
Installation of USB-RS232 Converter under iMac

Note :

1. Please install USB-RS232 Converter at the procedure below.
2. Plug the USB-RS232 Converter into the USB port of your computer.

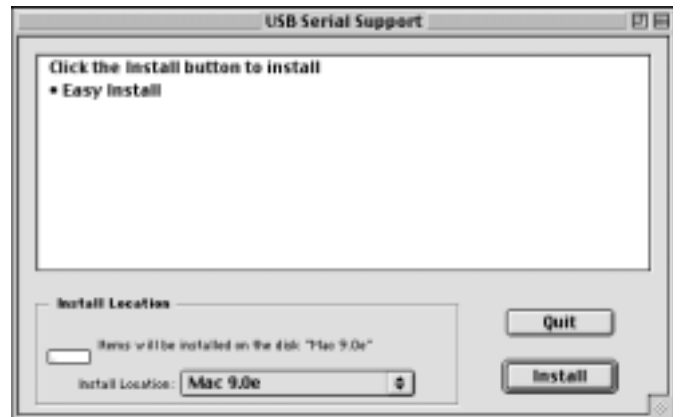
Step 1:

- (A) Please install the driver disk
Into your computer.
- (B) Double click “USB Serial Support”
to continue.



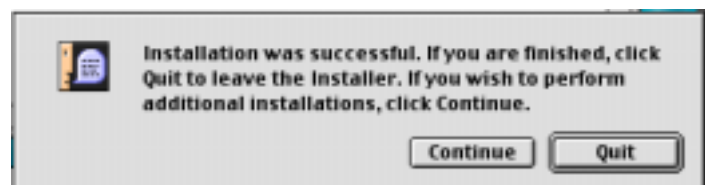
Step 2:

Click “Install” to continue.



Step 3:

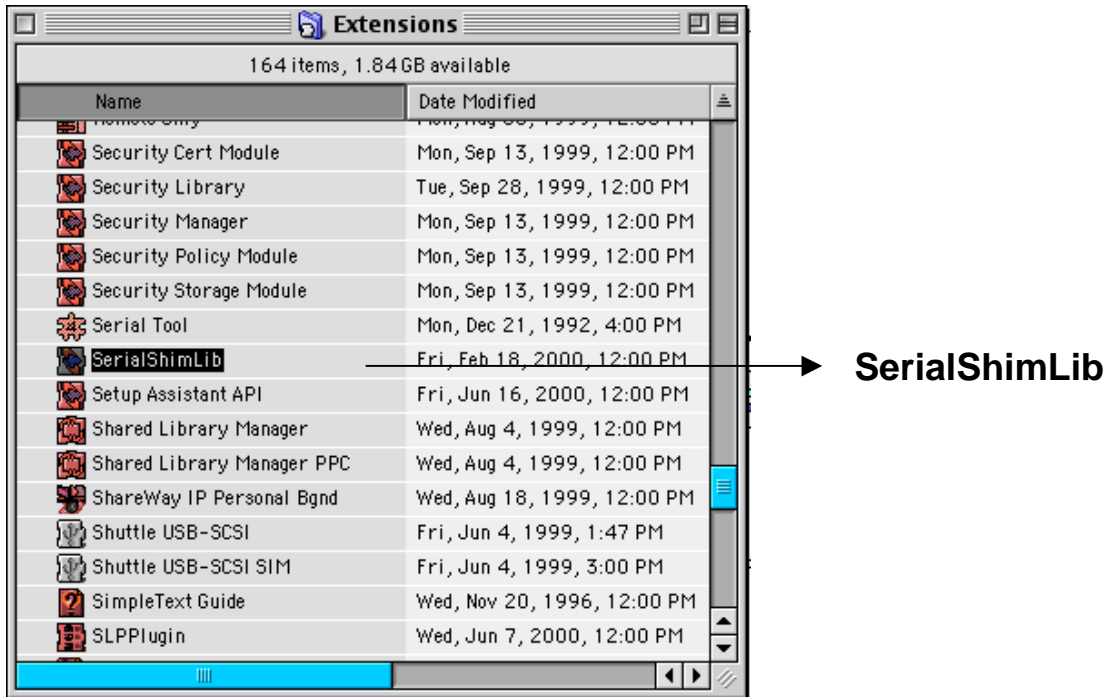
Click “Quit” to complete setup.



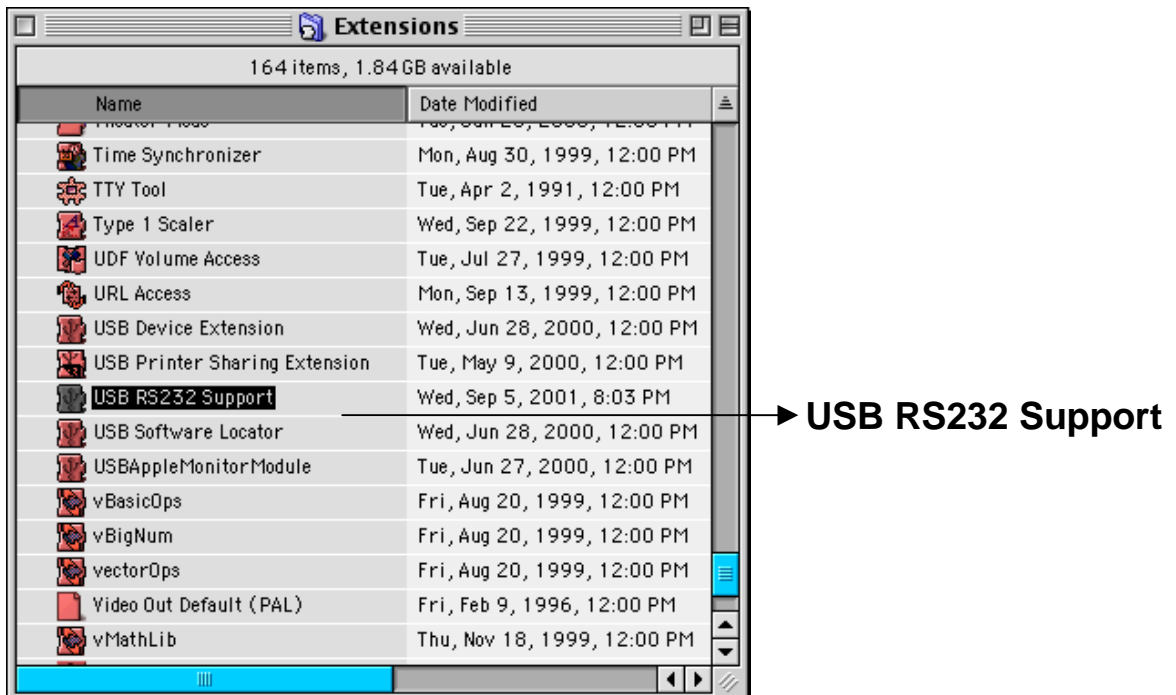
◆ **To make sure the USB-RS232 Converter has installed successfully**

Please move the cursor to “Hard Disk” → “System Folder” → “Extensions”. It will create new direction “SerialShimLib” and “USB RS232 Support”.

(A)



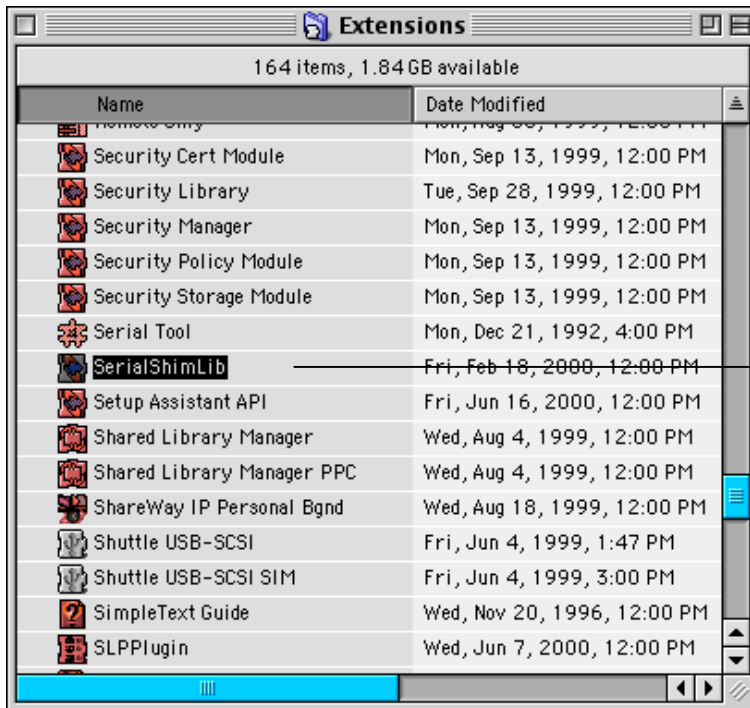
(B)



◆ Uninstallation

If you want to remove the driver of USB RS232 Converter, please move the cursor to “Hard Disk” → “System Folder” → “Extensions” then move the “SerialShimlib” and “USB RS232 Support” to trash.

(A)



SerialShimlib

(B)



USB RS232 Support

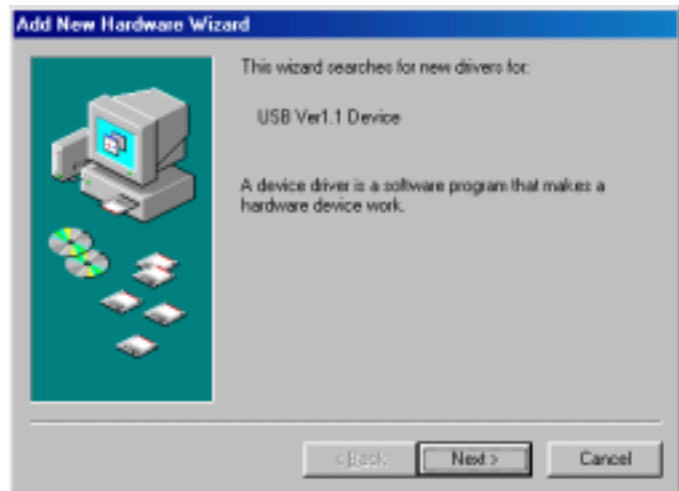
Installation of USB-RS232 Converter under Win98

Note:

1. Plug the USB-RS232 Converter into the USB port of your computer then system will detect the device.
2. Please install USB-RS232 Converter and follow the procedure as below:

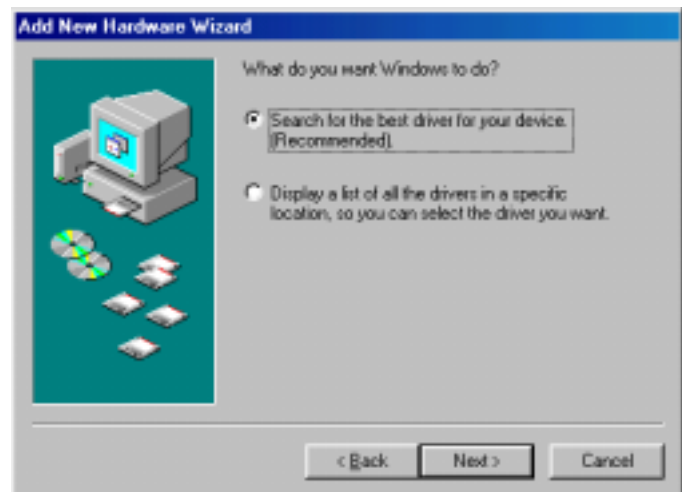
Step 1.

- (A) Please insert the driver disk into your computer.
- (B) Click "Next" to continue.



Step 2.

- A) Select "Search for best driver for your device. [Recommended]"
- B) Click "Next" to continue.



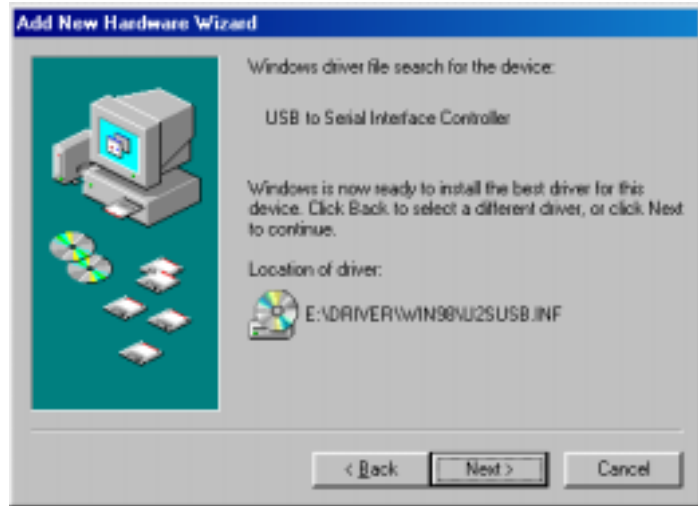
Step 3.

- (1) Select "CD-ROM" drive & "Specify a location"
- (2) Click "Browse" to indicate the driver path from CD-ROM. Then click "Next" to continue.
The path is E:\DRIVER\Win98.



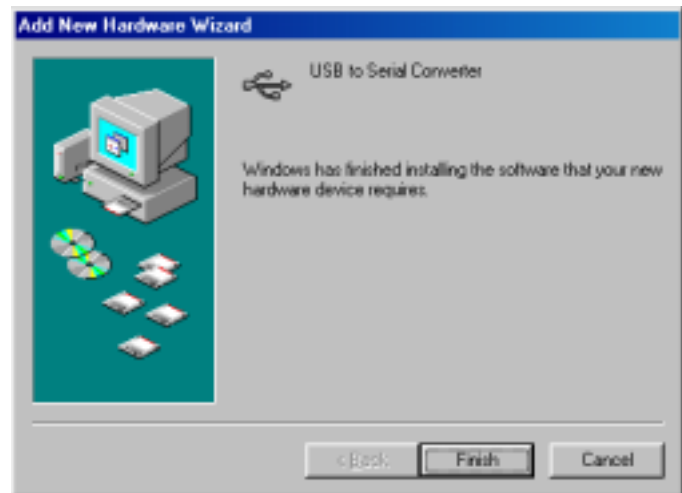
Step 4.

Click "Next" to continue.



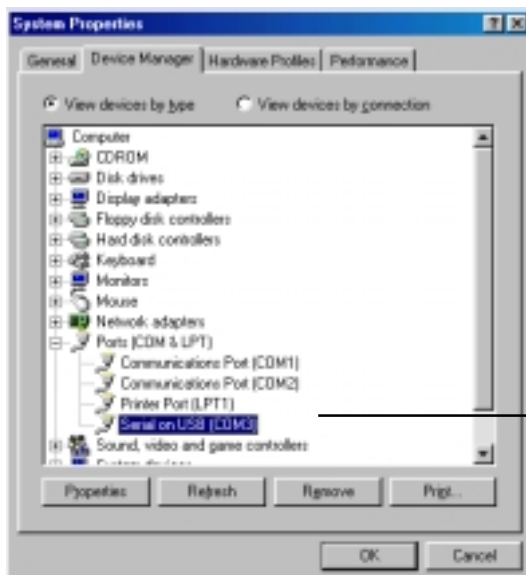
Step 5.

Click "Finish" to complete setup.



◆ **To make sure the USB-RS232 Converter has installed successfully**

Please move the cursor to "My computer" → "Control Panel" → "System" → "Device Manager". Double click "Ports [COM & LPT]" and it will show a new direction "Serial on USB [COM3]"



Serial on USB [COM3]

◆ Un-installation

If you want to remove the driver of USB-RS232 Converter, please insert the driver disk into your computer and follow the procedure as below:

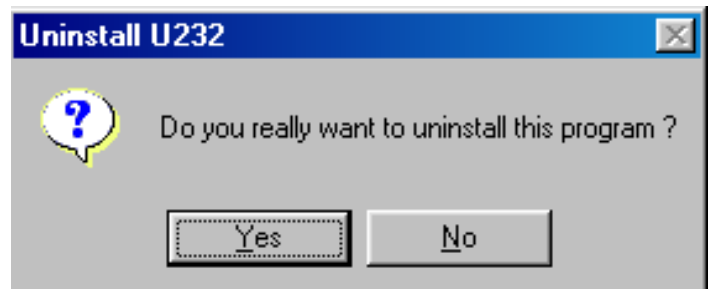
Step A:

Double click “Uninstall.exe” to uninstall from your CD-ROM. The path is E:\driver\uninstall.exe.



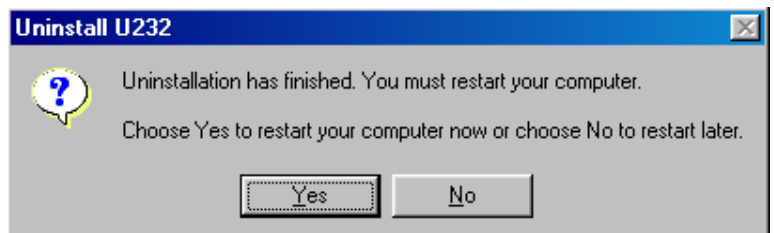
Step B:

Click “Yes” to continue.



Step C:

Click “Yes” to restart your computer and complete removing the driver of USB-RS232 Converter.



Installation of USB-RS232 under Win2000

Note:

1. Plug the USB-RS232 Converter into the USB port of your computer then system will detect the device.
2. Please install USB-RS232 Converter and follow the procedure as below:

Step 1:

- (A) Please insert the driver disk into your computer.
- (B) Click “Next” to continued.



Step 2:

- (1) Select “Search for a suitable driver for my device [recommended]”
- (2) Click “Next” to continue.



Step 3:

- (1) Select “Specify a location”
- (2) Click “Next”.



Step 4:

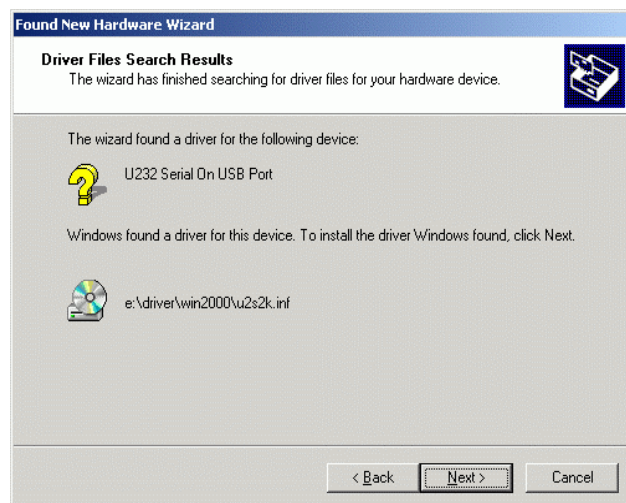
(A) Click "Browse" to indicate the driver path from CD ROM. The path is E:\driver\win2000"

(B) Click "OK" to continue.



Step 5:

Click "Next" to continue.



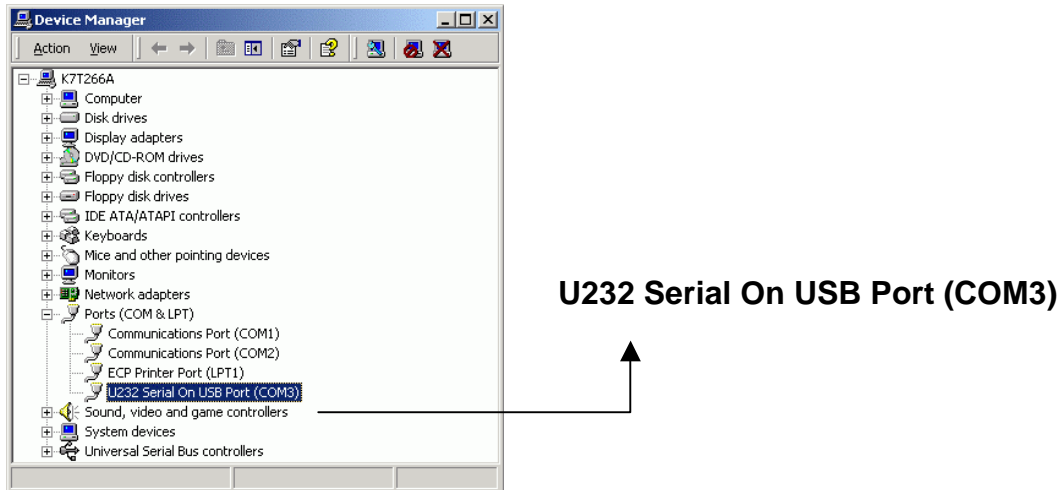
Step 6:

Click "Finish" to complete setup.



◆ Check USB-RS232 Device on Device Manager installed Successfully

Please move the cursor to “My Computer”→ “Control Panel”→ “System”→ “Hardware”→ “Device Manager”. Double click “Ports (COM & LPT)” and it will show a new direction “U232 Serial On USB Port (COM3)”.

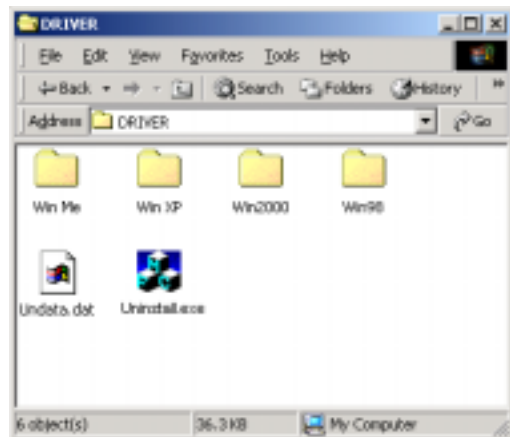


◆ Uninstall

If you want to remove the driver of USB-RS232 Converter, please insert the driver disk into your computer and follow the procedure as below:

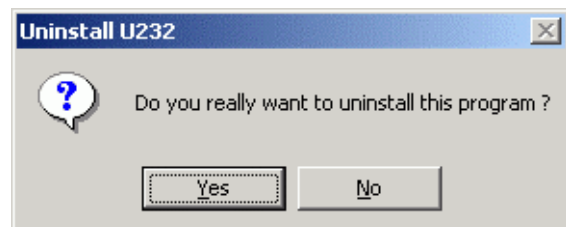
Step A:

Double click “Uninstall.exe” to uninstall from your CD-ROM. The path is E:\driver\uninstall.exe.



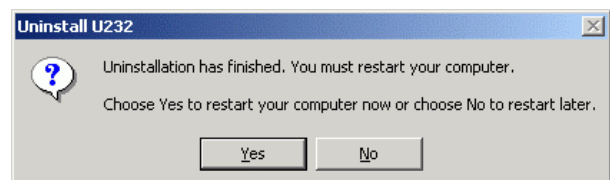
Step B:

Click “Yes” to continue.



Step C:

Click “Yes” to restart your computer and complete removing the driver of USB-RS232 Converter.



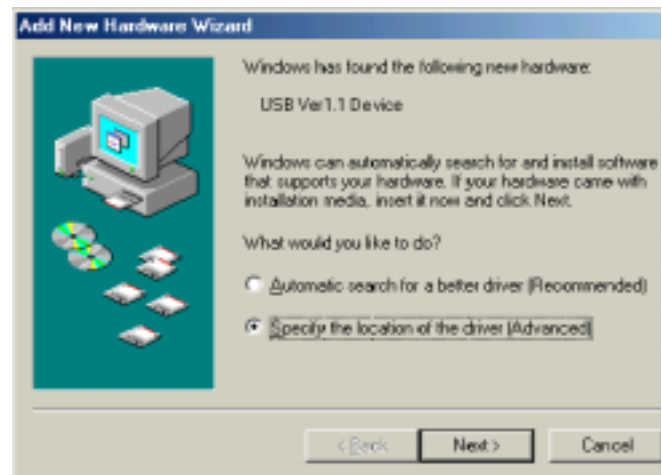
Installation of USB-RS232 Converter under WinME

Note:

1. Plug the USB-RS232 Converter into the USB port of your computer then system will detect the device.
2. Please install USB-RS232 Converter and follow the procedure as below:

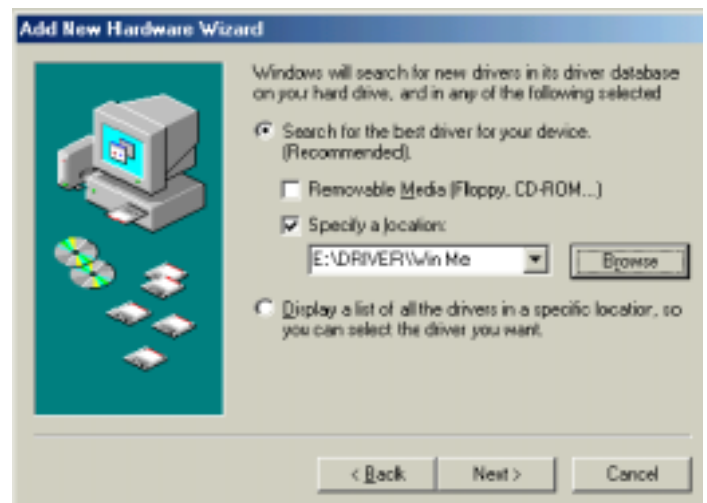
Step 1:

- (A) Please insert the driver disk into your computer.
- (B) Select "Specify the location of the Driver [advanced]."
- (C) Click "Next" to continue.



Step 2:

- (A) Select "Search for the best driver For your device [Recommended]."
- (B) Select "Specify a location:"
- (C) Click "Browse" to indicate the driver path from CD-ROM. Then click "Next" to continue.
The path is e:\driver\WinMe.



Step 3:

Click "Next" to continue.



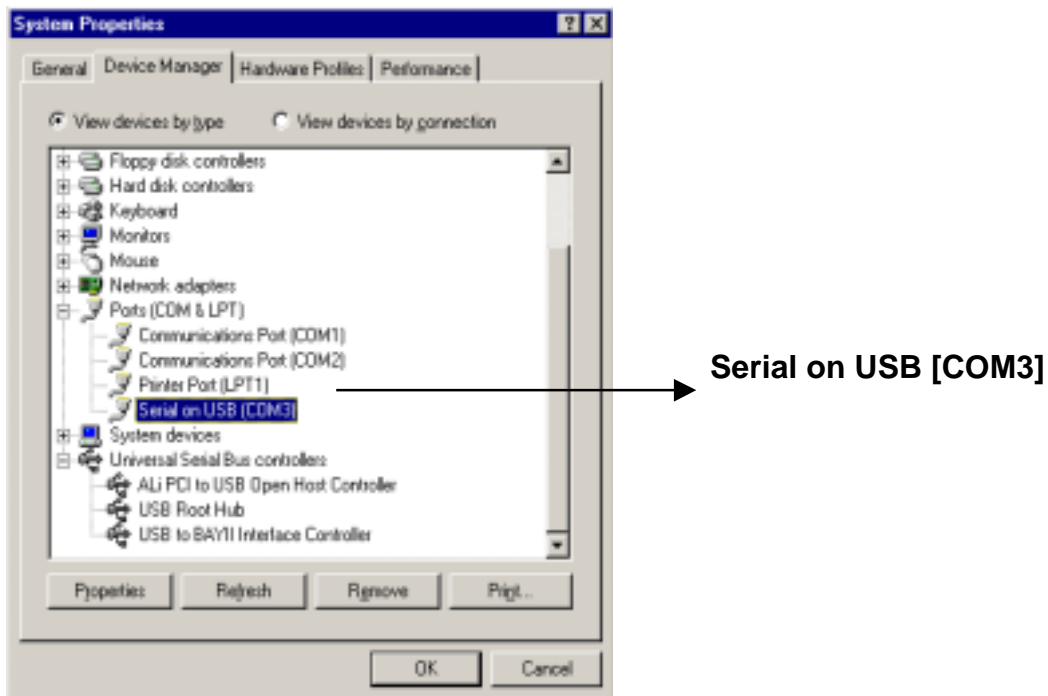
Step 4:

Click “Finish” to complete setup.



◆ **Check USB Converter on Device manager installed Successfully**

Please move the cursor to “My computer” → “Control Panel” → “System” → “Device Manager”. Double click “Ports [COM & LPT] and it will show a new direction “Serial on USB [COM3]”.

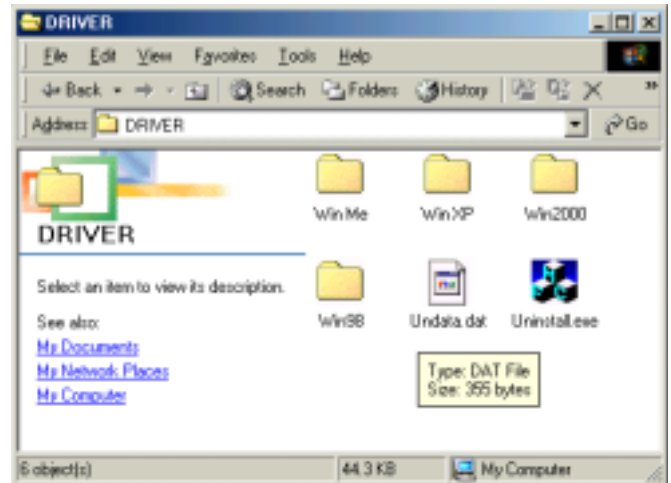


◆ Uninstallation

If you want to remove the driver of USB-RS232 Converter, please insert the driver disk into your computer and follow the procedure as below:

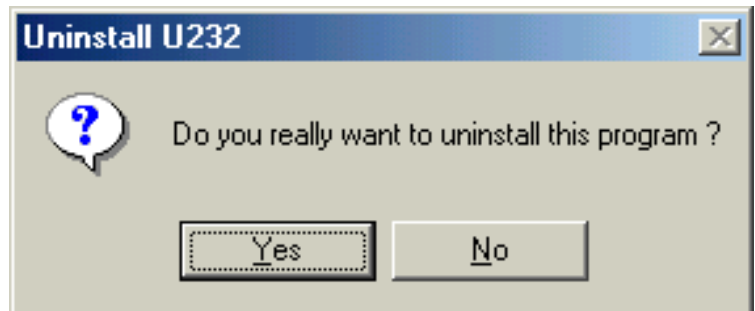
Step A:

Double click “Uninstall.exe” to uninstall from your CD-ROM.
The path is E:\driver\uninstall.exe.



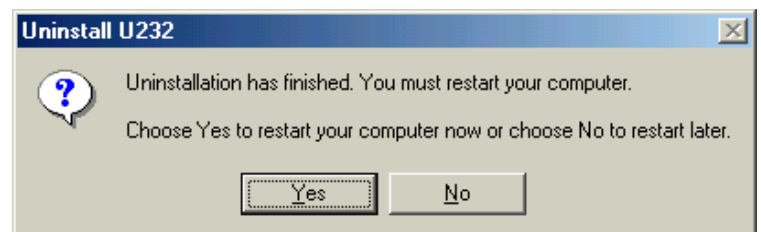
Step B:

Click “Yes” to continue.



Step B:

Click “Yes” to restart your computer and complete removing the driver of USB-RS232 Converter.



Installation of USB-RS232 under WinXP

Note:

1. Plug in the USB cable into the USB port of your PC, the system will detect the device.
2. Please install USB-RS232 and follow the procedure as below:

Step 1:

- (A) Select “Install from a list or specific location [Advanced]”
- (B) To insert the driver disk into your computer.
- (C) Click “Next” to continue.



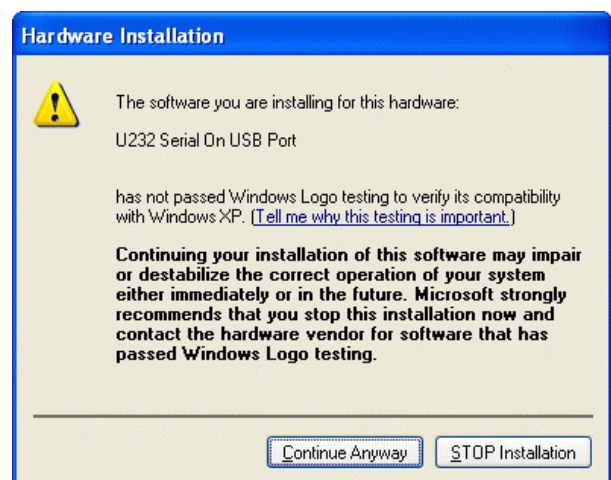
Step 2:

- (A) Select “Search for the best in these locations”.
- (B) Select “Include this location in the Search:”
- (C) Click “Browse” to select “E:\driver\WinXP” then click “Next” to continue.

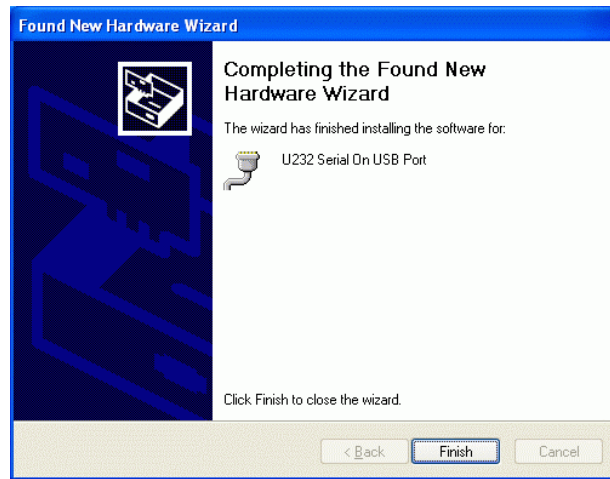


Step 3:

Click “Continue Anyway” to continue.



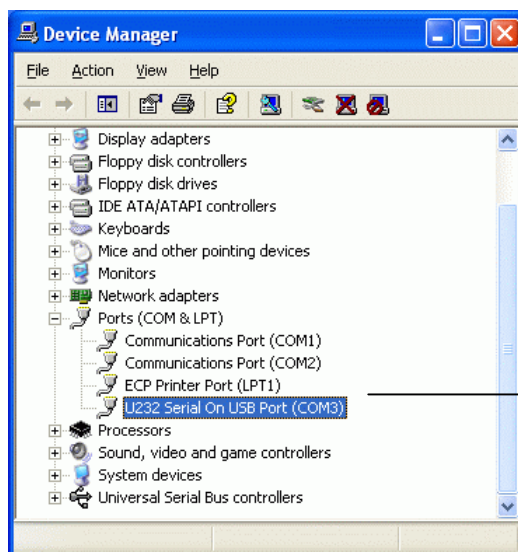
Step 4:
Click “Finish” to complete setup.



◆ **Check USB-RS232 Device on Device Manager installed Successfully**

Please follow the path as under listing :

1. “My Computer”→ “Control Panel”→ “Performance and maintenance”→ “System” → “Hardware” → “Device Manager”
2. Move the cursor to “Ports (COM & LPT)” and click it, then you will see the device “U232 Serial On USB Port (COM3)”



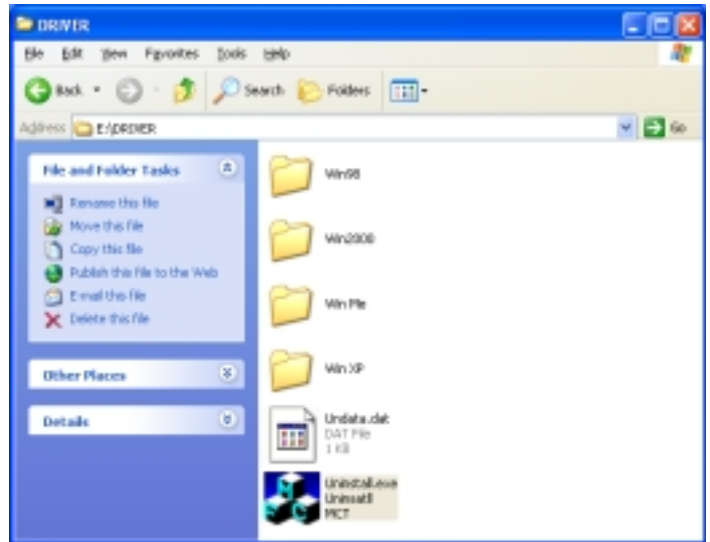
USB Serial On USB Port (COM3)

◆ Uninstall

If you want to remove the driver of USB-RS232 Converter, please insert the driver disk into your computer and follow the procedure as below:

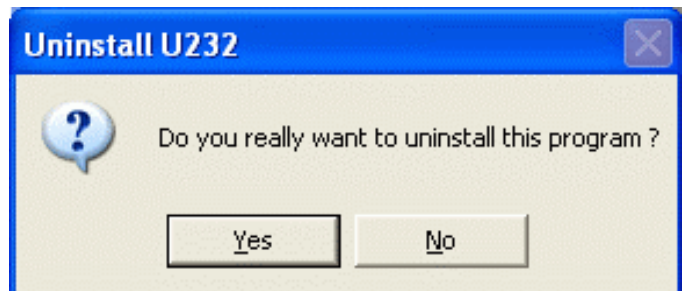
Step A:

Double click “Uninstall.exe”
to uninstall from your CD-ROM.
The path is E:\driver\uninstall.exe



Step B:

Click “yes” to continue.



Step C:

Click “Yes” to restart your computer
And complete removing the driver
Of USB-RS232 Converter.

